



Cisco HyperFlex Edge Configurations

June 2020



Configuration 1

CISCO HYPERFLEX EDGE HYBRID

- 2 x UCS C220 M5
- 4 x CPU Intel i4210
- 256 GB RAM
- 6 x 1.2TB 10k Disks
- 2 x 480GB SSD Cache
- 2 x VIC 1457 10/25 GB
- 36 months support

Configuration 2

CISCO HYPERFLEX EDGE HYBRID

- 2 x UCS C220 M5
- 4 x CPU Intel i4214
- 384 GB RAM
- 6 x 2.4 TB 10k Disks
- 2 x 480GB SSD Cache
- 2 x VIC 1457 10/25 GB
- 36 months support

Configuration 3

CISCO HYPERFLEX EDGE HYBRID

- 2 x UCS C220 M5
- 4 x CPU Intel i4216
- 512 GB RAM
- 10 x 2.4 TB 10k Disks
- 2 x 480GB SSD Cache
- 2 x VIC 1457 10/25 GB
- 36 months support

Configuration 4

CISCO HYPERFLEX EDGE HYBRID

- 2 x UCS C220 M5
- 4 x CPU Intel i4210
- 256 GB RAM
- 8 x 960 GB SSD Disks
- 2 x 800GB SSD Cache
- 2 x VIC 1457 10/25 GB
- 36 months support

Configuration 5

CISCO HYPERFLEX EDGE HYBRID

- 2 x UCS C220 M5
- 4 x CPU Intel i4216
- 384 GB RAM
- 14 x 960 GB SSD Disks
- 2 x 800GB SSD Cache
- 2 x VIC 1457 10/25 GB
- 36 months support

Configuration 6

CISCO HYPERFLEX EDGE HYBRID

- 2 x UCS C220 M5
- 4 x CPU Intel i5220R
- 512 GB RAM
- 6 x 3.8 TB SSD Disks
- 2 x 800GB SSD Cache
- 2 x VIC 1457 10/25 GB
- 36 months support

Improved pricing and more efficient ordering

Win with SmartPlays, easy ordering, great price, faster time to market

Comparable to DSA level discounts	SmartPlay Bundle	HX All-Flash HX220 Value	UCS C220M5 Medium
	Ordering PID	HXAF-SP-220M5C-V <ul style="list-style-type: none">• 2x Intel® Xeon® Processor 4214R• 192GB DDR4 RDIMM (6x 32GB 2933 MHz)	UCS-SP-C220M5CL-M 6226R (2) 384GB DDR4 DIMM (12x 32GB)
	SmartPlay List	\$50,463	\$31,319
	CTO/GPL List	\$63,957	\$47,281

Promotions

For even better pricing combine with other promotions available such as Account Breakaway, Competitive, TIP, OIP, MIP, HX Authorisation, VIP, Try & Buy or NFR

Incentives

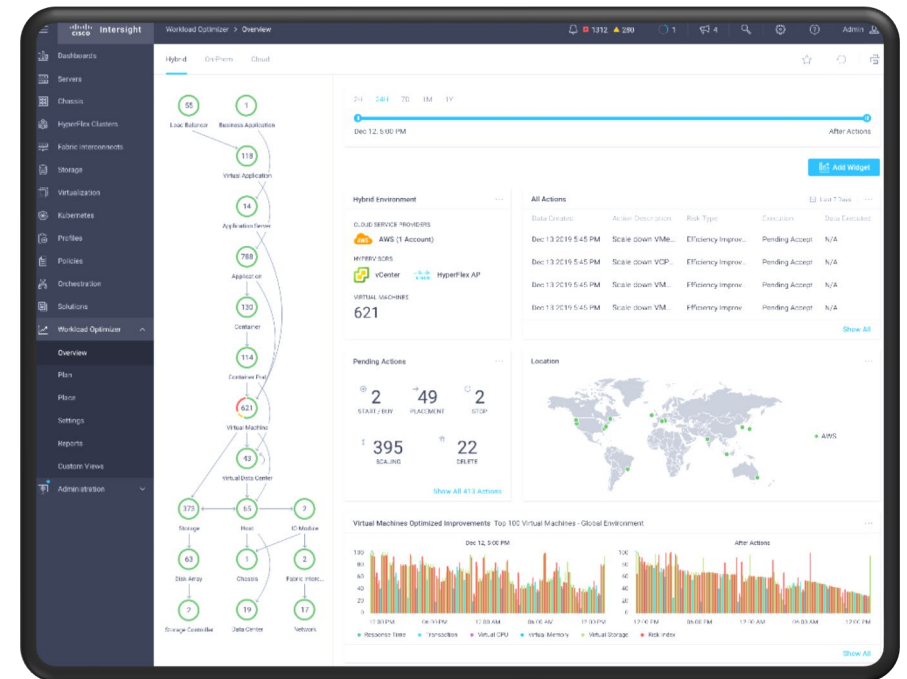
Comstor will reward you for expanding your HyperFlex and UCS customer base

Cisco Intersight

Cisco Intersight is a cloud-based simplified administration tool for your Cisco UCS infrastructure, no matter where it is located.

Features

- Use global search to quickly identify systems based on names, identifiers or other information
- Monitor cisco UCS and Cisco Hyperflex server configurations, alerts, and health status across multiple data centers and remote locations
- Track and administer firmware versions of all connected Cisco UCS and Cisco Hyperflex systems
- View and report inventory information for Cisco UCS and Cisco Hyperflex systems
- Have automated alerts about crash notifications
- Automate the creation and sending of technical support files to Cisco technical center (TAC) to speed up the troubleshooting process
- Ensure consistency and eliminate configuration errors by profiling
- Among others....



Quick Links

SmartPlay Launch Links

[SmartPlay Program Partner Landing Page](#)

[SmartPlay Compute - Cascade Lake Partner Landing Page](#)
(Will replace the Sky Lake Landing Page soon)

[SmartPlay Compute – Cascade Lake Program Guide](#)
(Direct Link TBD but can be found on the both landing pages)

[SmartPlay Compute – Cascade Lake HyperFlex Ordering VOD](#)

[SmartPlay Compute – Sky Lake Program Guide](#)
(Direct Link TBD but is being moved to the SmartPlay Landing Page)

[Build & Price UCS Promotions](#)
(New Offers up after launch)

Other Useful Links:

[Partner/Disti DC Sales Hub](#)

[Partner/Disti Global Launch Hub](#)

[Partner Central Incentives and Promotions](#)

[Proposal Library](#)

[Interisight Demo](#)

[dCloud](#)

Contact your Comstor team for more information on these solutions, recurring offer possibilities and financing payment options for your customers.

Contact your Comstor CDI team now

