

# Enhancing The Healthcare Experience

With AI DRIVEN Wireless Wi-Fi

# Enhancing The Healthcare Experience

With AI DRIVEN Wireless Wi-Fi

Old WLANs that were designed before the Smartphone era must be replaced by more modern wireless platforms, which bring new levels of scale, reliability, and simplicity to healthcare facilities - plus high accuracy location services to take advantage of the unique attributes of Smartphones, tablets and computers.

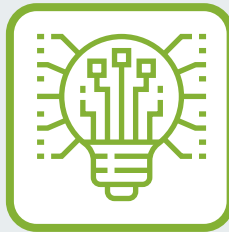
This is the value proposition of Mist's next generation wireless platform, which takes a unique user-first approach to wireless. Built from the ground-up to deliver smart wireless services for the Smart Device Era, Mist combines unprecedented insight into wireless user behavior with proactive actions for simpler operations and amazing mobile experience. Mist is the first vendor to use Artificial Intelligence to make Wi-Fi predictable, reliable, and measurable. Setup is easy, with automated operations that let you focus on clinical operations and patient care instead of troubleshooting.

# MIST WIRELESS NETWORKING FUNCTIONS



## A purpose-built in cloud architecture

Mist provides unprecedented visibility and control at web scale, with a micro-services architecture for extreme agility when rolling out new features and services.



## Data science meets wireless wizardry

Mist uses machine learning, event correlation, and automation to ensure the wireless network is always optimized for constantly changing user requirements and device capabilities (with minimal manual IT intervention.)



## Integrated high accuracy location

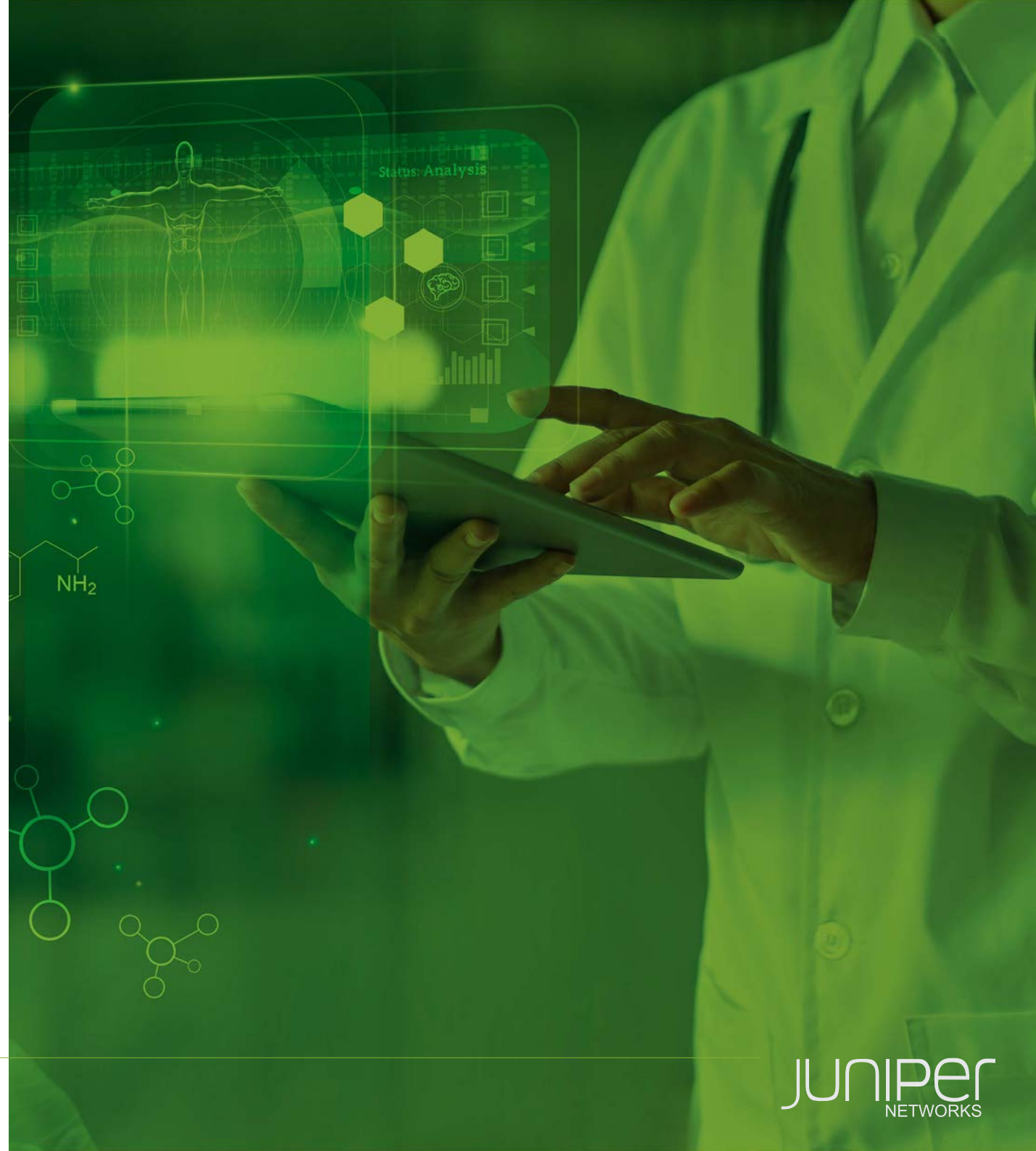
With Mist, you can see where the mobile are at all times and deliver high value location services with the click of a mouse. No physical beacons or site surveys are required.



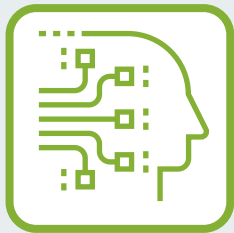
# Why it is important to opt for Mist AI

## Driven wireless for Healthcare

Modern healthcare needs modern wireless technology. If internet access and remote connectivity to records are all that are required, legacy WLAN solutions are a perfect pill. But if scalability, ease of use, automation, and high accuracy locations services are required to deliver amazing patient, caregiver, guest, administrator and IT experiences, then Mist is just what the doctor ordered.

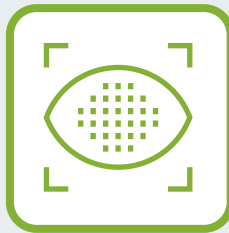


# BENEFITS OF USING MIST AI-Driven Wireless WI-FI



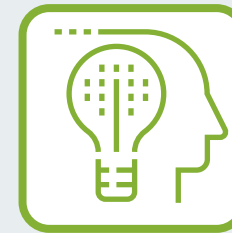
## Easy to Setup, Operate, and Troubleshoot

- Customizable Wi-Fi service levels
- Easy guest access with captive portal, SMS, and social media login
- Simple troubleshooting with AI-driven virtual assistant
- APIs ensure fast configuration with no errors



## Cost-effective Asset Location

- Standards-based Bluetooth eliminates need for proprietary RTLS
- Single platform for all wireless needs
- Real-time heat maps and historical data for analytics



## Deliver New Mobile Experiences

- Personalize the patient experience (with virtual Bluetooth® LE):
- Mobile check-in
  - Proximity messages, alerts, and notifications
  - Turn-by-turn directions
  - Find closest assistance
  - Lock doors, turn on security cameras, and other IoT integration

# WHY MIST?

The Mist platform lets you think centrally and act locally through a combination of cloud-based intelligence and on premises enterprise-grade Access Points. The Mist wireless platform uses machine learning to automate key tasks like event correlation, location, and clustering to dramatically simplify wireless operations and deliver personalized services to mobile users. The Mist wireless network is purpose-built on a modern microservices cloud architecture, ensuring the industry's best scale with unprecedented agility for rolling out or changing services.

# WHY WESTCON?

At Westcon, we're creating a future built on winning alliances. As businesses chart their digital transformation, new openings are created. Specialising across data centre, infrastructure, collaboration and security, we're here to help partners take advantage of innovations in analytics, AI, cloud, cybersecurity, IoT, SD-WAN and much, much more. And, when you partner with the channel's most outstanding levels of value and service, be assured that you're ready to seize the opportunity.





# Our partnership in practice

## Technical enablement:

we keep you up to speed with tailored training, sales enablement and one-to-one bootcamps

## Lead generation:

dedicated business development managers help you grow and develop a Juniper pipeline

## Proof of concept:

offer customers a try-before-you-buy programme with best-in-class demo units and facilities

## Winning team:

we are Juniper's Distributor Partner of the Year for providing the best possible outcomes for its customers

Upsell, cross-sell or net new – grow your Juniper business with Westcon

## Contact us

Paulo Neves  
Sales Manager

[ucc.pt@westcon.com](mailto:ucc.pt@westcon.com)  
[www.westconcomstor.com](http://www.westconcomstor.com)