

Westcon Services Implementation Guide

Pricing

Version 2.1

Document Revision 1.0.0

January 11, 2017



Document Revision History			
Version	Date	Author	Description
1.0.0	2017-01-11	Chakravarthy Sayani	Created new doc for Pricing API v2.1

Table of Contents

1.	Overview	4
2.0	Getting Started.....	5
2.1	Working with Westcon Group	5
2.2	Accessing Westcon Group Services	5
3.0	Order Status	7
3.1	Request Schema.....	8
3.2	Response Schema	8
3.3	Additional Notes about Request Fields.....	9
3.3.1	Customer Number and Sales Organization fields	9
4.0	Consuming the Service.....	10
4.1	Setting up .NET Client	10
4.1.1	Add a Service Reference	10
4.1.2	Binding Configuration	11
4.1.3	Sample Client Code	11
4.2	Setting up SoapUI client.....	12
4.2.1	Adding WSDL.....	12
4.2.2	Supplying Credentials.....	13
4.2.3	Sample Request	13
4.2.4	Sample Response	14
5.0	Reference Tables.....	16
5.1	Info Table (Sample)	16

1. Overview

Westcon Services are a suite of API's that serve as a direct B2B electronic link between Westcon and its partners, complementing existing website portals and other B2C links. Westcon Services offer a variety of services, including Pricing, Availability, Order Placement (Purchase Order), Order Change, Order Status and Return Merchandise Authorisation (RMA).

With Westcon Services, partners can seamlessly integrate information such as product pricing, stock availability obtained from Westcon in real-time – into both internal business and customer-facing services such as a shopping cart.

2.0 Getting Started

Welcome to Westcon Group partner integration! We will assist you along each step and answer questions throughout the process. We understand that each integration project is unique and you will be treated with the utmost attention and expediency.

2.1 Working with Westcon Group

Westcon will assemble a team to manage and implement your integration project.

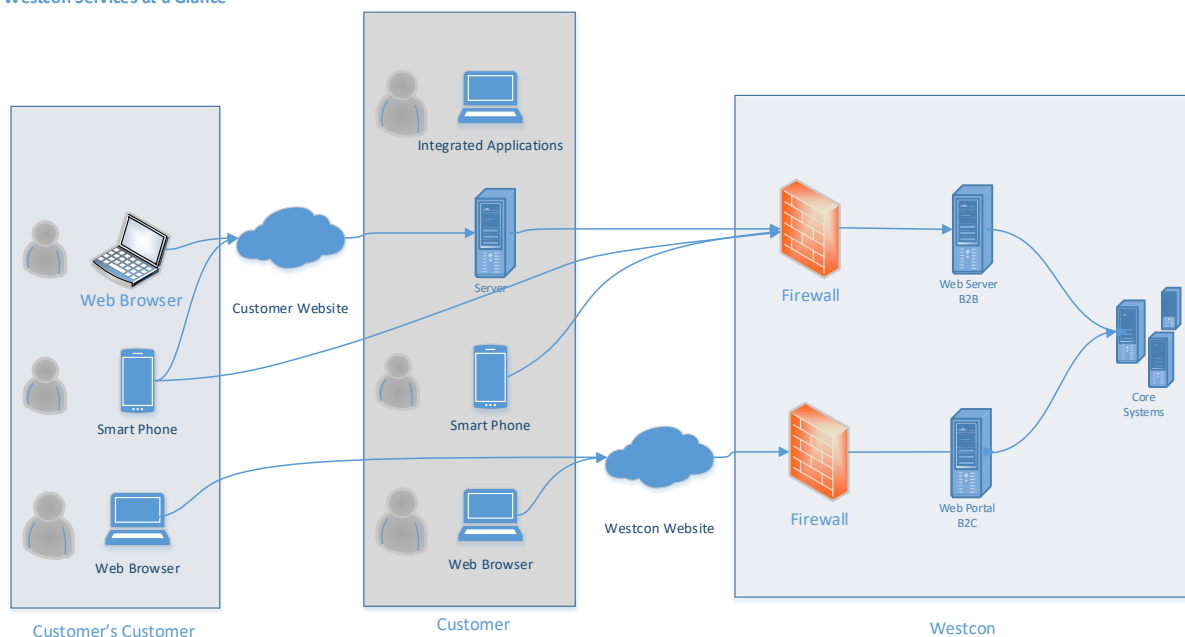
The Application Integrations Team is available Monday – Friday, from 9:00 am EST to 5:00 pm EST. For questions or guidance on your implementation, kindly reach out to Brad Ross, (914) 829-7631.

To contact our Support email address –

ITS_B2BSupport@Westcon.com

2.2 Accessing Westcon Group Services

Westcon Services at a Glance






The service WSDL is provided to the customers to build proxy service. The request and response structure of these operations are described in the associated sections. To address the security requirements, IP Security is implemented and the traffic is over a secure HTTPS transport. Furthermore, there is a Username-Password authentication at message level. The authentication credentials will be provided separately.

3.0 Order Status

Service	Operations	Description
Pricing	GetPricing	Retrieve pricing for the specified products

Environment	Url
QA	https://webservicetest.westcon.com/B2B/Pricing/v2/Pricing.svc
Production	TBD
Service definition	 PricingServiceVersion2_WSDL.svc

3.1 Request Schema

Schema Element	Field Type (Length)	Required	Example	Notes
WestconPricingRequest				
WestconMetadata		Optional		
SourceSystem	string(12)	Optional	B2B	INTERNAL USE ONLY
TimeStamp	datetime	Optional		INTERNAL USE ONLY
OperationType	string(12)	Optional	GET	INTERNAL USE ONLY
Culture	string(4)	Optional	2000	INTERNAL USE ONLY
TransactionID	string(32)	Optional	Pricing	INTERNAL USE ONLY
WestconMetadata				
CurrencyCode	string(12)	Optional	USD	ISO Country Code
Customer				
CustomerNumber	string(10)	Required		Customer Number is set up separately for specific Sales region, for the same customer. Sales region such as US, UK, Canada etc. are specified using SalesOrganization field. See additional notes here:
SalesOrganization	string(4)	Required		SalesOrganization code must be specified along with Customer Number. For example, 2000 for US, 2100 for Canada. See additional notes here:
DistributionChannel	string(2)	Optional	01	INTERNAL USE ONLY
Division	string(2)	Optional	01	INTERNAL USE ONLY
Customer				
Products				
Product				
ProductId	string(35)	Required	ABC123	Material Number. These numbers are provided to the customers in the price lists sent separately.
Product				
Products				
WestconPricingRequest				

3.2 Response Schema

Schema Element	Field Type (Length)	Required	Example	Notes
WestconPricingRequest				
WestconMetadata		Optional		
SourceSystem	string(12)	Optional	B2B	INTERNAL USE ONLY
TimeStamp	datetime	Optional		INTERNAL USE ONLY
OperationType	string(12)	Optional	GET	INTERNAL USE ONLY
Culture	string(4)	Optional	2000	INTERNAL USE ONLY
TransactionID	string(32)	Optional	Pricing	INTERNAL USE ONLY
WestconMetadata				
CurrencyCode	string(12)	Optional	USD	ISO Country Code, Same value in the request is returned
ErrorMessage	string(255)	Optional		Errors from backend service
Customer				
CustomerNumber	string(10)	Required		Same value as in request
SalesOrganization	string(4)	Required		Same value as in request
DistributionChannel	string(2)	Optional	01	INTERNAL USE ONLY
Division	string(2)	Optional	01	INTERNAL USE ONLY
Customer				

Products				
Product				
ProductId	string(35)	Required	ABC123	Material Number. These numbers are provided to the customers in the price lists sent separately.
CustomerPrice	string(15)	Required	100.00	
ListPrice	string(15)	Optional	100.00	
Error				
ErrorCode	string(2)	Optional		
ErrorMessage	string(255)	Optional		
Error				
Product				
Products				
WestconPricingRequest				

3.3 Additional Notes about Request Fields

3.3.1 Customer Number and Sales Organization fields

A customer can have multiple account numbers set up for different Sales Regions. Sales Regions are specified in Sales Organization field.

For example, Customer X has the following accounts:

Customer Number	Sales Organization	Currency
1234567	2000	USD
1234578	2100	CAD
2355789	6000	AUD

When request price, the customer number must be specified as per the table depending on the Sales Organization.

The Username in the request authentication usually matches with one of the customer numbers. This remains the same even if the order is placed in different Sales Regions.

For example, if the Username is 1234567, in order to place an order in Australia, the Username is still 1234567, but the CustomerAccountNumber=2355789 and SalesOrganization=6000.

4.0 Consuming the Service

Please find the Pricing Request and Response fields below with examples. Required fields must be filled in, in order to get proper data.

There are 3 main sections that you need to populate for a successful pricing request:

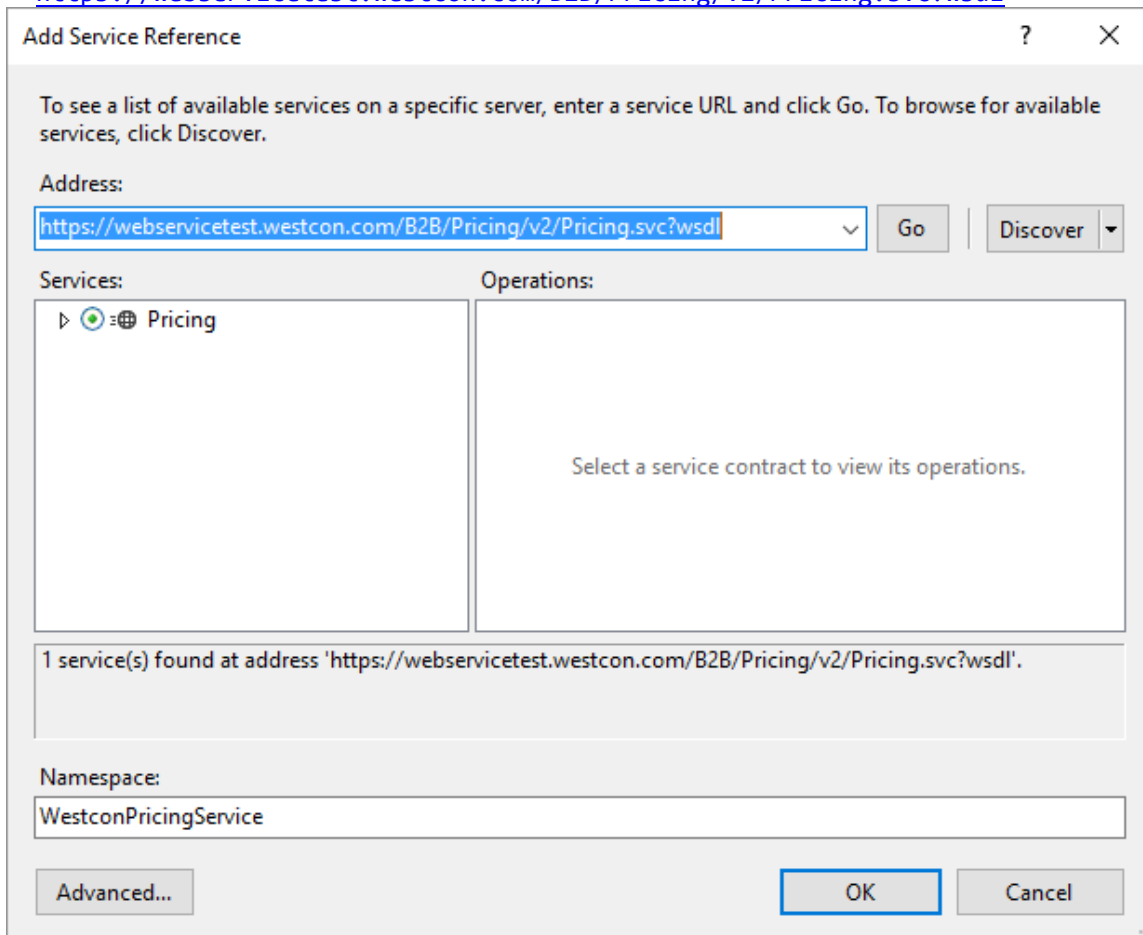
- **CustomerNumber:** Provide your username as it appears in the Subscriber's Details Document.
- **SalesOrganization:** This is 2000 for US. For others look in this section.
- **ProductId:** please include one or more ProductIds in the Products block.

4.1 Setting up .NET Client

4.1.1 Add a Service Reference

Create Service Reference using the following wsdl. For this sample, the name `PricingService` is used for the Service Reference.

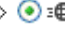
<https://webservicetest.westcon.com/B2B/Pricing/v2/Pricing.svc?wsdl>



Add Service Reference ? X

To see a list of available services on a specific server, enter a service URL and click Go. To browse for available services, click Discover.

Address:
 Go Discover

Services:	Operations:
<div>  Pricing </div>	<p>Select a service contract to view its operations.</p>

1 service(s) found at address 'https://webservicetest.westcon.com/B2B/Pricing/v2/Pricing.svc?wsdl'.

Namespace:

Advanced... OK Cancel

4.1.2 Binding Configuration

Ensure the bindings are configured as below:

```
<system.serviceModel>
  <bindings>
    <wsHttpBinding>
      <binding name="WestconPricingSoap">
        <security mode="TransportWithMessageCredential">
          <transport clientCredentialType="None"/>
          <message clientCredentialType="UserName"
establishSecurityContext="false"/>
        </security>
      </binding>
    </wsHttpBinding>
  </bindings>
  <client>
    <endpoint
address="https://webservicetest.westcon.com/B2B/Pricing/v2/Pricing.svc"
      binding="wsHttpBinding"
      bindingConfiguration="WestconPricingSoap"
      contract="WestconPricingService.IPricing"
      name="WestconPricingSoap" />
    </client>
  </system.serviceModel>
```

4.1.3 Sample Client Code

Values provided in the following code sample are only for demo purpose. They cannot be used as is.

```
class Program
{
    private static void Main(string[] args)
    {
        var pricingService = new
WestconPricingService.PricingClient("WestconPricingSoap")
        {
            ClientCredentials =
            {
                //Replace with the credentials provided to you
                UserName =
                {
                    UserName = "1001212",
                    Password = "sN8DThqnkZEabGJt9PtcU8ILs3CjgTpDyFj1"
                }
            }
        };

        var productList = new Products();
        var products = new[]
        {
            new Product{ProductId = "10199"},
            new Product{ProductId = "10227"},
        };
    }
}
```

```

    }.ToList();
    productList.AddRange(products);

    var request = new WestconPricingService.WestconPricingRequest
    {
        CurrencyCode = "USD",
        Customer = new Customer
        {
            CustomerNumber = "1001212", //Replace with actual Customer number
            SalesOrganization = "2000",
        },
        Products = productList
    };

    try
    {
        var response = pricingService.GetPricing(request);
    }
    catch (Exception e)
    {
        HandleException(e);
    }

}

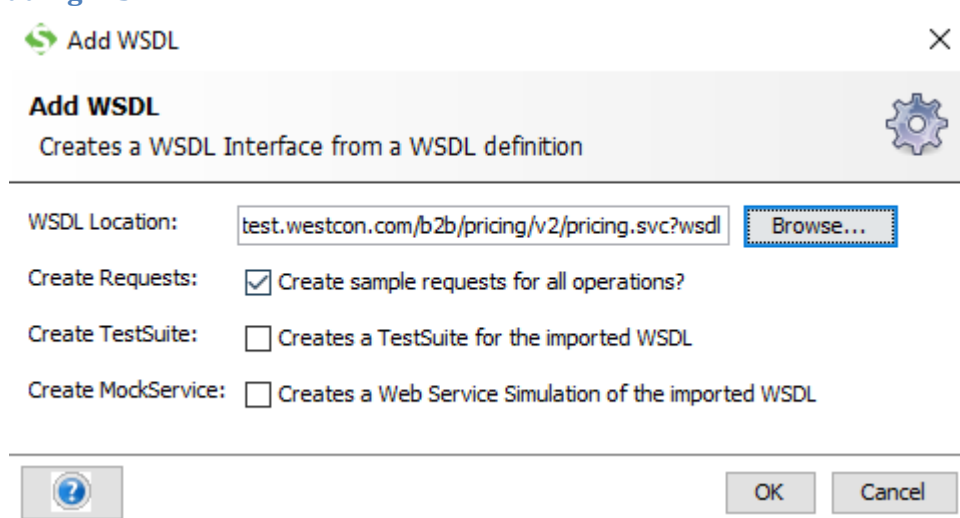
private static void HandleException(Exception exception)
{
    //Handle exceptions
}
}

```

4.2 Setting up SoapUI client

Use SoapUI tool to perform the initial tests quickly. SoapUI allows creating the client quickly and providing the XML input templates to quickly generate a client and test.

4.2.1 Adding WSDL




WSDL Location: <https://webservicetest.westcon.com/B2B/Pricing/v2/Pricing.svc?wsdl>

4.2.2 Supplying Credentials

In order to pass the credentials, the following 3 Request properties must be set as shown below.

Username and **Password** are provided to you separately, which are 2 of the 3 properties. For the 3rd property, **WSS-PasswordType**, select *PasswordText* from the drop down against this property.



Property	Value
Name	Request 1
Description	
Message Size	1415
Encoding	UTF-8
Endpoint	http://localhost/B2B/Pricing/v2/Pricing..
Timeout	
Bind Address	
Follow Redirects	true
Username	1001212
Password	*****
Domain	
Authentication Type	No Authorization
WSS-Password Type	PasswordText
WSS TimeToLive	
SSL Keystore	
Skip SOAP Action	false
Enable MTOM	false
Force MTOM	false
Inline Response Attachments	false

4.2.3 Sample Request

Sample Pricing Request

```
<?xml version="1.0" encoding="UTF-8"?>
<soap:Envelope xmlns:soap="http://www.w3.org/2003/05/soap-envelope"
xmlns:tem="http://tempuri.org/"
xmlns:wes="http://schemas.datacontract.org/2004/07/Westcon.B2B.WebServices.Pricing.Contracts.Request"
xmlns:wes1="http://schemas.datacontract.org/2004/07/Westcon.B2B.WebServices.Pricing.Contracts">
  <soap:Header/>
  <soap:Body>
    <tem:GetPricing>
      <tem:request>
        <wes:WestconMetadata>
          <wes1:Culture>E</wes1:Culture>
          <wes1:OperationType>GET</wes1:OperationType>
          <wes1:SourceSystem>B2BWEB</wes1:SourceSystem>
          <wes1:TimeStamp>2017-01-11T09:00:00Z</wes1:TimeStamp>
        </wes:WestconMetadata>
      </tem:request>
    </tem:GetPricing>
  </soap:Body>
</soap:Envelope>
```

```

        <wes1:TransactionID>CustomerPricing</wes1:TransactionID>
    </wes:WestconMetadata>
    <wes:CurrencyCode>USD</wes:CurrencyCode>
    <wes:Customer>
        <wes1:CustomerNumber>1001065</wes1:CustomerNumber>
        <wes1:SalesOrganization>2000</wes1:SalesOrganization>
        <wes1:DistributionChannel>01</wes1:DistributionChannel>
        <wes1:Division>01</wes1:Division>
    </wes:Customer>
    <wes:Products>
        <wes:Product>
            <wes:ProductId>10199</wes:ProductId>
        </wes:Product>
    </wes:Products>
    </tem:request>
</tem:GetPricing>
</soap:Body>
</soap:Envelope>

```

4.2.4 Sample Response

Response

```

<s:Envelope xmlns:s="http://www.w3.org/2003/05/soap-envelope"
  xmlns:a="http://www.w3.org/2005/08/addressing" xmlns:u="http://docs.oasis-
  open.org/wss/2004/01/oasis-200401-wss-wssecurity-utility-1.0.xsd">
  <s:Header>
    <a:Action
  s:mustUnderstand="1">http://tempuri.org/IPricing/GetPricingResponse</a:Action>
    <o:Security s:mustUnderstand="1" xmlns:o="http://docs.oasis-
  open.org/wss/2004/01/oasis-200401-wss-wssecurity-secext-1.0.xsd">
      <u:Timestamp u:Id="_0">
        <u:Created>2017-01-11T22:09:50.494Z</u:Created>
        <u:Expires>2017-01-11T22:14:50.494Z</u:Expires>
      </u:Timestamp>
    </o:Security>
  </s:Header>
  <s:Body>
    <GetPricingResponse xmlns="http://tempuri.org/">
      <GetPricingResult
  xmlns:b="http://schemas.datacontract.org/2004/07/Westcon.B2B.WebServices.Pricing.Contracts.Response"
  xmlns:i="http://www.w3.org/2001/XMLSchema-instance">
        <b:WestconMetaData
  xmlns:c="http://schemas.datacontract.org/2004/07/Westcon.B2B.WebServices.Pricing.Contracts">
          <c:Culture>E</c:Culture>
          <c:OperationType>Get</c:OperationType>
          <c:SourceSystem>EQN-300</c:SourceSystem>
          <c:TimeStamp>2017-01-11T05:09:50Z</c:TimeStamp>
          <c:TransactionID>Customer Pricing 1.0</c:TransactionID>
        </b:WestconMetaData>
        <b:CurrencyCode>USD</b:CurrencyCode>
        <b:Customer
  xmlns:c="http://schemas.datacontract.org/2004/07/Westcon.B2B.WebServices.Pricing.Contracts">
          <c:CustomerNumber>0001001065</c:CustomerNumber>
          <c:SalesOrganization>2000</c:SalesOrganization>
          <c:DistributionChannel>01</c:DistributionChannel>
          <c:Division>01</c:Division>
        </b:Customer>
        <b:ErrorMessage/>

```



```
<b:Products>
  <b:Product>
    <b:ProductId>10199</b:ProductId>
    <b:ListPrice>99.60</b:ListPrice>
    <b:CustomerPrice>99.60</b:CustomerPrice>
    <b>Error>
      <b:ErrorCode/>
      <b:ErrorMessage i:nil="true"/>
    </b>Error>
  </b:Product>
</b:Products>
</GetPricingResult>
</GetPricingResponse>
</s:Body>
</s:Envelope>
```

5.0 Reference Tables

5.1 Info Table (Sample)

This table contains customer specific details required for successful exchange with Westcon services. Customer should have received this during the on-boarding process.

Customer	SAMPLE COMPANY	This is your Company Name
Account: (username)	1001212	This is your Account number as it appears in our backend systems
Authentication Key: (password)	sN8DThqnkZEabGJt9PtcU8lIs3CjgTpDyFj1	This is a 36-character key with which you will be authenticated
Your Westcon Company	00011	This value is data that is specific to your account which should be included with your web service call
RBU / HRBU	119920 (for Westcon) 119951 (for Vodaone) 119992 (for Comstor)	This value is data that is specific to your account which should be included with your web service call
Currency	USD	
Route Code	U04	Used for PO
Shipping Method	1311	Used for PO
Main WWS-URL	https://webservices.westcon.com	