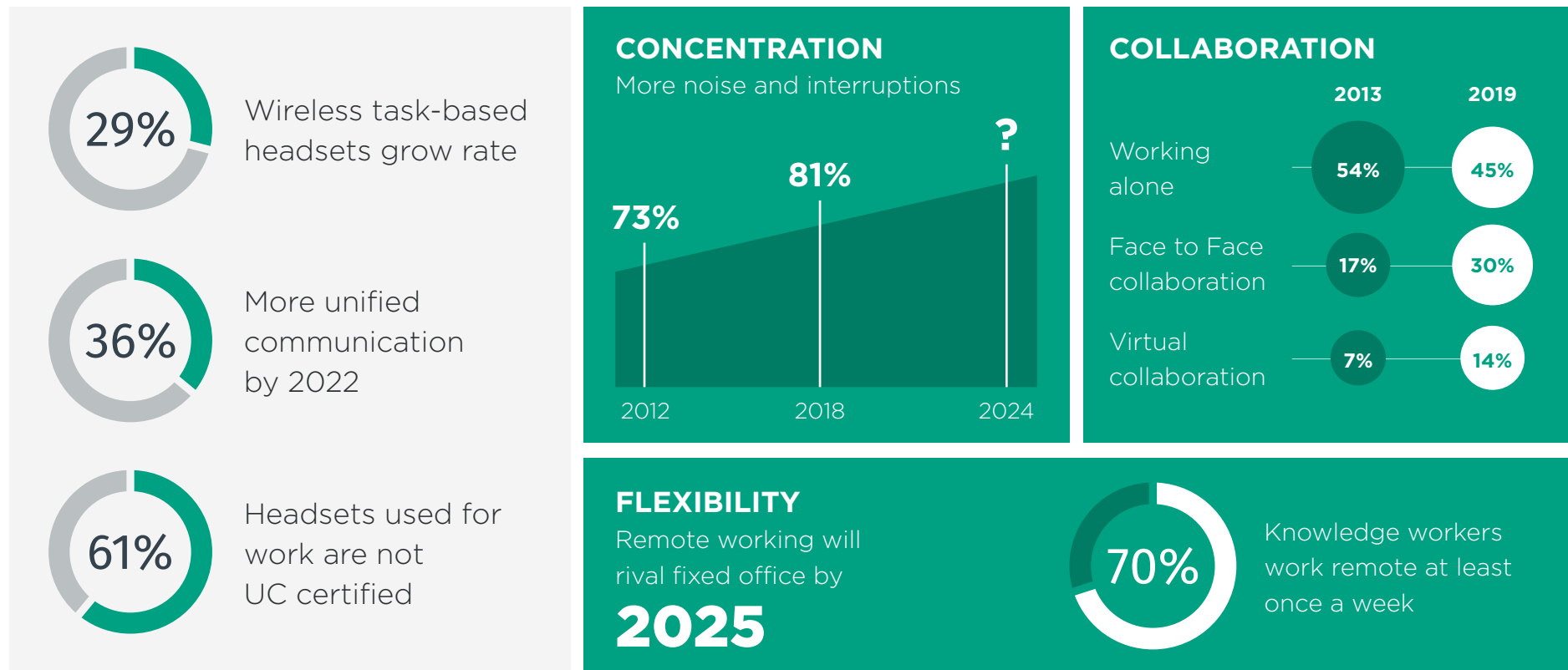


# 5-Minute Guide to the **Jabra Evolve2 Series**



## Market opportunity

The annual growth rate of wireless office headsets is nearly 30% per year powered by UC which continues to grow at 36%. Plus Jabra research shows that as many as 61% of existing work headsets are non UC certified consumer devices that users bring to work.



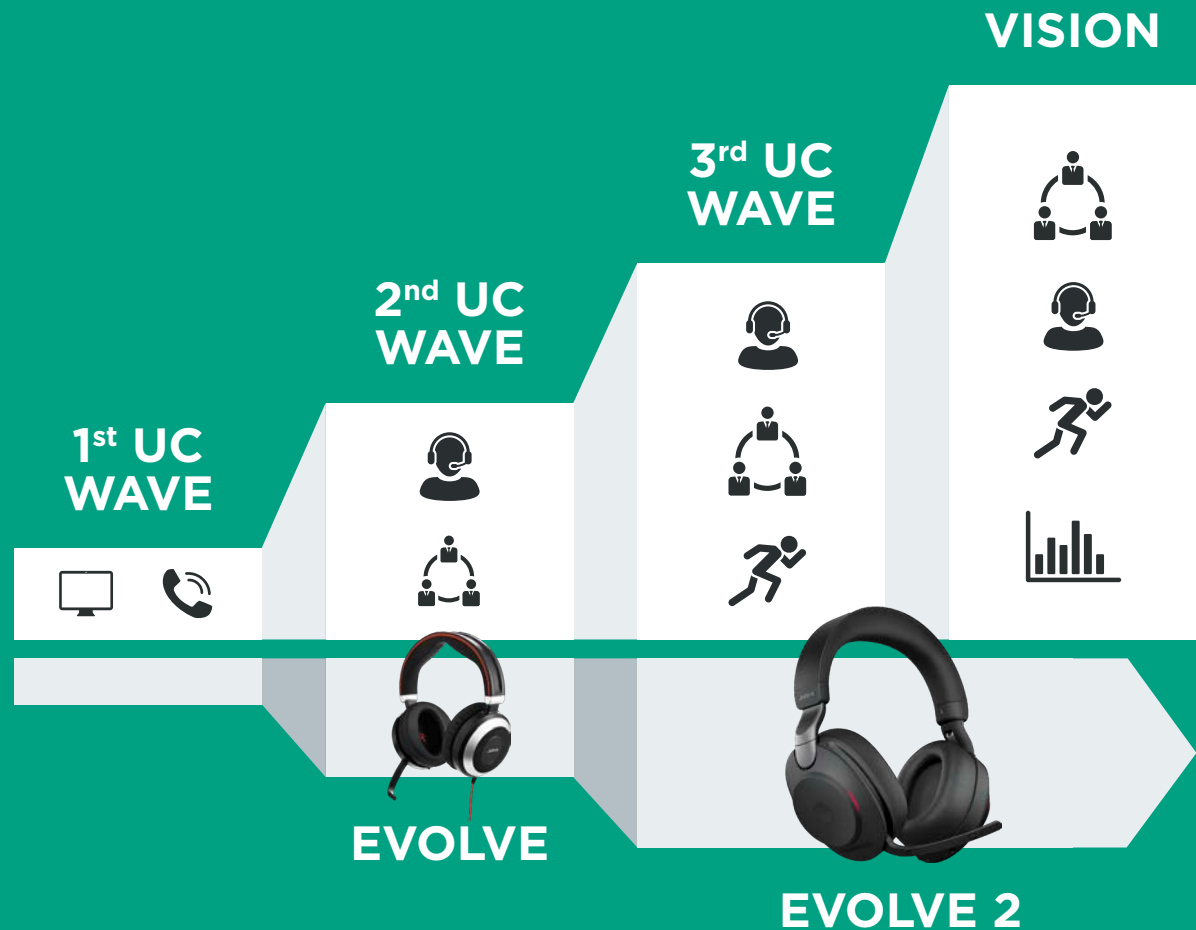
Noise and interruptions are the main pain points for workers in open offices. We may not be in the office so much now, but a noisy home is just as relevant. There's a clear shift from working alone to collaboration. Concentration, collaboration and flexibility must co-exist for workers to be productive in the future.

## Evolution

UC is a journey. In the beginning it was all about being able to connect USB headset to enable voice calls on softphones. This evolved to a focus on increasing adoption with products like Evolve that were about blocking noise. UC is now delivering on productivity and innovation. Work is no longer a place you go, it's something you do.

The first wave of Evolve2 targets the desk worker and the remote worker.

- The desk worker's main pain point is noise and interruptions which affect his productivity and concentration.
- The remote worker needs to be able to roam around the house and cut out distractions from family members.





**Jabra** GN

## Why the new series?

- Up to **2x better collaboration**: engineered to bring distributed teams together
- Up to **4x better concentration**: engineered to block out more noise
- Up to **3x better flexibility**: engineered to power work from anywhere

Concentration, collaboration and flexibility must co-exist to power productivity and these are the key pillars of Evolve2

## EVOLVE2 85

Engineered to keep you focused.  
The best headset for concentration  
and collaboration.



Charging  
stand

Improved passive noise  
cancellation and digital hybrid  
active noise cancellation

Rich and clear music with  
custom 40mm speakers

360° Busylight

MS Open Office certification  
and dedicated Teams button\*

Up to 30m/100ft  
wireless range

Personalisation with Jabra  
Direct and Sound+

Dual  
connectivity

On-ear detection for smart  
media and power management

Up to 37 hours  
of battery

Hide-away boom arm for calls  
in the office and on the go



Concentration



Collaboration



Flexibility

**Jabra** GN

## EVOLVE2 65

Engineered to keep you agile.  
Work anywhere with superior  
wireless audio performance.

The Evolve2 65 has the same family  
features as the 85 in terms of the  
new chipset, the 360° busy light,  
powerful speakers and so on. It  
offers a truly all-day battery time  
with 37 hours of non-stop calls and  
music. Evolve2 65 and Evolve2 85  
are also available in beige.



USB  
dongles

Up to 30m/100ft  
wireless range

Dual connectivity

Improved passive noise  
cancellation

360° Busylight

One-touch access to voice  
assistant or dedicated Teams  
button

Boom-arm mute and  
auto answer

Motion sensor to  
detect use

Up to 37 hours  
of battery

Personalisation with  
Jabra Direct and Sound+

Powerful music  
40mm speakers

Unmatched call performance  
Open Office certification

● Concentration    ● Collaboration    ● Flexibility



## EVOLVE2 40

Engineered to keep you on task. Exceptional audio, outstanding noise isolation, superior comfort.

Jabra Evolve2 40 is the wired version of the Evolve 65 and comes with a very similar feature set. The main difference is the connectivity which for Evolve2 40 is USB-a or USB-c.



Corded w/  
USB-C



Corded w/  
USB-A

Improved passive noise  
cancellation

360° Busylight

Dedicated  
Teams button

Boom-arm mute and  
auto answer

Motion sensor to  
detect use

Personalisation with  
Jabra Direct and Sound+

Powerful music  
40mm speakers

Unmatched call performance  
Open Office certification



Concentration



Collaboration



Flexibility

**Jabra** GN

## UC-certified means UC-satisfied

Evolve2 works with all leading UC platforms, and is the first range of headsets certified for MS Teams.

### Certified for all leading UC platforms



### Partners in UC Monitoring space



### Developer Community SDK Program



### 1st Party Software



Evolve2 sets a new standard for ecosystem and experience. All products will have UC versions and variants certified for MS Teams with a dedicated Teams button. Finally Jabra also offers a strong suite of 1st party software giving the IT manager full control of his headset assets and the user the ability to fully personalise their sound experience.



## Engineered for Microsoft Teams

Teams-certified means teams are satisfied.

### Notifications:

- Incoming Microsoft Teams calls
- Microsoft Teams meeting ready to join
- Microsoft Teams missed calls
- Microsoft Teams voicemails

Purple led flashing when the user is not wearing headset.

Voice prompt when the user is wearing headset.

### Dedicated Microsoft Team button:

- Answer incoming MS Teams calls
- Opening the meeting “Join now” screen
- Opening missed calls screen
- Opening MS Teams voicemail screen

## Why Jabra / What is in it for you?

Jabra has firmly establish itself as the top enteprise brand with 60% market share. It has sold more than 16.5 million units and served around 40,000 business globally.



### UPSELL

**Tempt your customers to upgrade** with a premium solution that's superior in every aspect and has a higher margin alternative.



### NEW BUSINESS

**Evolve your revenue streams** with the new range that gives you more to sell, and more for your customers to love from the market-leader.



### TECHNOLOGY

**Increase customer loyalty** with a range of headsets that are premium-built, durable, easy to deploy and maintain.



### UC ADOPTION

**Increase your customers' user adoption** by helping them really see the potential of the platform they're using. Evolve2 works with all leading UC platforms.



### TRUST

**Be the expert your customers need** by offering solutions that set a new standard for modern working, opening up a conversation about the future of the modern workplace.

## Additional resources

Further details on Evolve2 Series headsets are available on the following documents:

- **Technical sheet**
- **Data sheets for UC certified and Microsoft certified options**



## Why Westcon

At Westcon, we're creating a future built on winning alliances. As businesses chart their digital transformation, new openings are created. Specialising across data centre, infrastructure, collaboration and security, we're here to help partners take advantage of innovations in analytics, AI, cloud, cybersecurity, IoT, SD-WAN and much, much more. And, when you partner with the channel's most outstanding levels of value and service, be assured that you're ready to seize the opportunity.

## Contact us

### Our office

Astral Towers  
Betts Way  
Crawley  
West Sussex  
RH10 9UY  
01293 806000  
[ucsales@westcon.co.uk](mailto:ucsales@westcon.co.uk)

### Our Jabra specialists

Tracy Glaysher  
07464 492728  
[tracy.glaysher@westcon.com](mailto:tracy.glaysher@westcon.com)  
  
Russell Mutter  
07881 501033  
[russell.mutter@westcon.com](mailto:russell.mutter@westcon.com)

